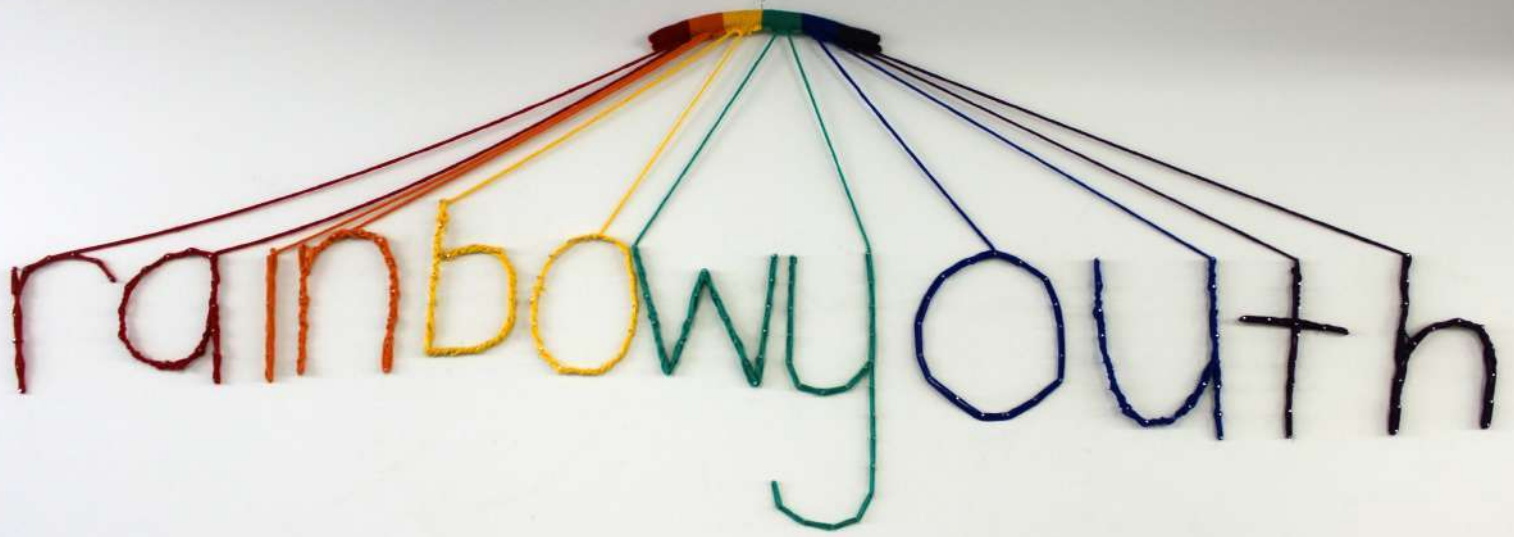




# 2016

## RainbowYOUTH Annual Report



# KIA ORA!

## Welcome to RainbowYOUTH's 2016 Annual Report.

RainbowYOUTH is a national charitable organisation based in Aotearoa (New Zealand), that works to support queer and gender diverse young people aged 27 and under.

### Our services:

- **Information** // resources, a queer & gender diverse library, research materials
- **Advocacy** // we advocate on behalf of young people facing discrimination at home, school, work or in their community
- **Education** // workshops for secondary schools, tertiary institutions & organisations
- **Drop-in Centre** // a safe space, free wifi, study spaces, (smoke, drug & alcohol free)
- **Peer-support groups** // seven locations around Auckland, Tauranga & Whangarei, providing friendly supportive environments to discuss issues & make friends (smoke, drug & alcohol free)
- **Support** // non-judgmental, confidential & free resources & referrals
- **Consultation** // on policy, procedures & services related to queer & gender diverse youth
- **Training & development** // CV references, work experience, volunteer training, facilitation/leadership training

### Get in touch!

info@ry.org.nz  
(09) 376 4155  
PO BOX 68383  
Newton, Auckland 1145

### Visit us!

Level 1  
11 Edinburgh Street,  
Auckland Central 1010  
Mon - Fri 11am - 5pm



## HELLO 11 EDINBURGH STREET!



It's been a long time coming, but we're finally, and officially, all moved in to our new centre!

We've been a rainbow presence on K'Rd since the early 2000s and while the old centre at 281 served us well, the growth of RY in the last 5 years has meant that we were pretty much bursting at the seams and in desperate need for a bit more room.

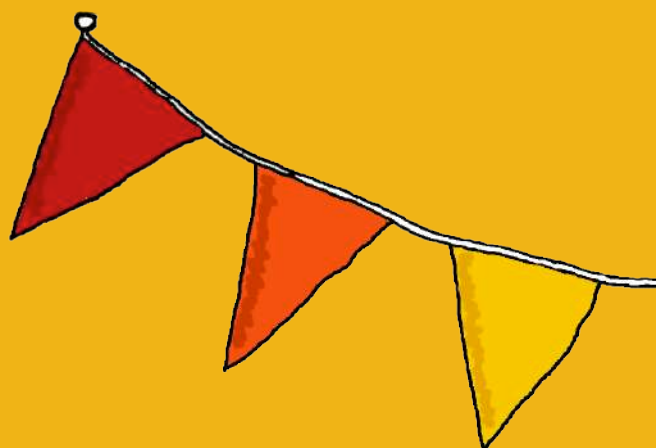
Our new centre is three times the size of the old one with space for all of our existing services, plus more private meeting rooms, space for staff to work and two bathrooms!

We'd like to say a huge **thank you** to the volunteers who came along over three separate days in mid-March to help us move and organise both the old and new centre - especially to the folks at **ASB & Have a Hart Auckland** (pictured bottom right) - you all rock!

*Come along and check it all out anytime:  
11 Edinburgh Street, Auckland Central  
Monday to Friday 11am - 5pm*



## CO-CHAIR REPORT - RACHEL BREBNER



The end of a board term is always a great time for reflection, looking back at what we've achieved as an organisation. This year's AGM brings to a close my third term on the RY board and I think I'm starting to notice a pattern in my end-of-term reflections. I end each board term thinking that the organisation has gone through such an incredible period of growth and exciting new projects that will be impossible for us to top in the next board term. And yet, somehow, RY always manages to surprise me with how much more it's capable of.

This board term saw the launch of Inside Out and its delivery to professionals and students across the country. This project has been years in the making and its completion represents the culmination of a lot of hard work for our staff. Along with I'm Local and our nationwide groups, this project represents RY's increased capacity to help young people beyond Auckland City.

I'm also incredibly proud of our move to a new centre. The increased size and more professional appearance of our new centre represents the incredible growth that RY has gone through, not only in terms of our capacity and membership, but also in terms of our branding. We are now a brand that people recognise and want to be associated with and this has been reflected in increased sponsorship by a wide range of organisations who all support RY's mission.

I'd like to say a massive thank-you to our incredibly hard working team of staff and volunteers for everything they've done over the past board term. RY would not be able to achieve the things that it does without the hard work of our interns, facilitators, board members, advisors, general volunteers, and our amazing staff team. Congratulations and thank you to everyone who has been involved with RY in the past year. I can't wait to see how RY continues to surprise us all this coming board term.

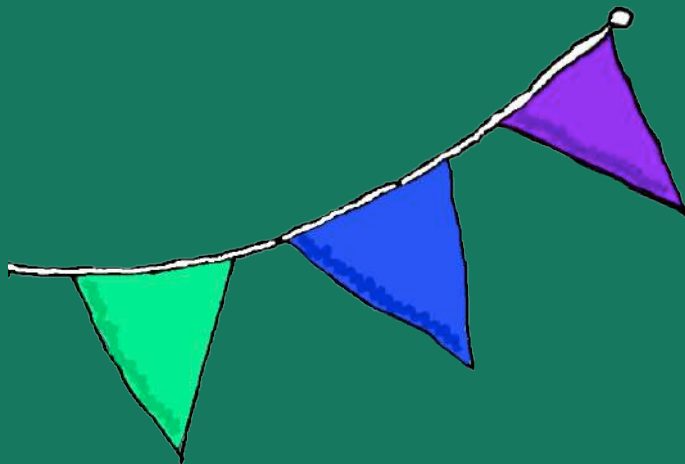
### **RY Executive Board 2015/16**

Rachel Brebner | Co-Chair  
Sophie Sills | Co-chair  
Hamish Tait | Treasurer  
Beth Maynard | Secretary  
Emilie Rākete | Māori & Pacific Rep  
Avery Watson  
Justine Sachs  
Natasha Gaffin  
Nicky Thorburn  
*Torranice Campel | Co-Chair  
& Trans\* Rep (Stepped down)*  
*Aaliyah Zionov (stepped down)*  
*Amanda Parkinson (stepped down)*

### **RY Executive Advisors 2016**

Anna Nelson  
Nick Liang  
Toni Reid

# CO-CHAIR REPORT - TORRANICE CAMPEL



## **RY Staff 2015/16**

Duncan Matthews | Executive Director  
Toni Duder | Communications and  
Operations Manager  
Morgan Butler | Support Manager  
Anahera Foley-Paama | Operations  
Coordinator

*Aram Wu (Left Dec 2015) | Aych McAr-  
dle (Left March 2016) | Chase Fox (Left  
Dec 2015) | Jason Smith (Left Dec  
2015)*

## **RY Educators 2015/16**

Ella Pilkington | Elspeth Fougere  
Luis Meirelles | Shannon Granich

## **RY Interns 2015/16**

Alex Murphy | Alice Dawson | Allison  
Slinger Angela Jallaguier | Aria Harri-  
son-Sparke | Ben Bridle | Cathy Wea-  
stell | Lang Ng Chok Lorren Grabarak  
| Ryan McKee | Sarah Daniel | Taylor  
Morris

## **RY Facilitators 2015/16**

Caity Fleming | Ben Bridle | Em Hill |  
Erica Cassie | Hayden Long-Smith | Izzi  
Panettiere | Jesse Paea | Katrina Clark  
| Kiriti Stokes | Laura Olsen | Laura  
Scott | Micaella St | Michelle Jane | Nick  
Parry | Ryvre Thompson | Sarah Cooper  
| Simon Hubbard | Tess Palmer-Wood |  
Trent Eacock | Victor Ikeda

It has been an interesting roller coaster of healthy learning while serving RainbowYOUTH as one of the co - chairs this term. The phenomenal amount of learning I have gained from this experience has developed my practice working in the rainbow space. The work ethic and passion RY staff put into their service delivery has been above expectations. A safe learning environment has seen our membership and networking relationships strengthen.

This year RY has worked to provide resources effectively appropriate for young people in the rainbow space. One highlight of our successful resources is working in partnership with Curative & Core Education to launch the Inside Out Resource which was delivered to several parts of the country. The feedback and success of this resource is a huge achievement.

Another highlight for me was the RY presence in the Auckland Pride Parade. RainbowYOUTH marched with diversity support service providers and community groups. Our group of marchers tallied to over 80 participants.

For many of our participants this was their first experience being involved in the Pride Parade. We also had people visiting New Zealand for Pride who joined us to march.

This years' message was 'YOU + ME = SOLIDARITY'. This was the first time since the establishment of the Auckland Pride Parade where a space of Ahurutanga was created for all youth diversity support service providers and community groups to integrate and share the same kaupapa.

Special thanks to this terms board for all your great work, RainbowYOUTH staff, ASB Bank, sponsors and more importantly our service users for trusting in this terms board I wish the next elected board members all the best in a great experience ahead.

## EXECUTIVE DIRECTOR - DUNCAN MATTHEWS

Approaching three years now in my role as Executive Director (formerly General Manager), and my seventh year with RainbowYOUTH in general, I feel only now do I start to have a grasp on the full effect of what RY achieves on a minute by minute, daily, monthly and yearly basis. The last 12 months have really cemented for me what I think RY is capable of achieving in the future, and I hope I will be around to see some of that eventuate.

Having said that, these last 12 months have also been a very challenging time at RY. Larger than usual staff turnover, big projects, and unexpected changes in our board have put significant stress on key people at RY. A big thanks to all those who worked to support me and others during this time.

The biggest project in the last 12 months has been a long time in the making - and something which is easy to see! RY first started working on moving premises in 2012, initially looking at joint premises with **OUTLine** and then the **NZAF**, before committing to lease 11 Edinburgh Street on our own in 2015. The move happened in March 2016, and in a few short months has significantly transformed the way staff are able to work and how services are provided at RY. I hope you all enjoy and feel free to come and use our new space as much as possible. It is here for everyone, and for everyone to make their own.

Acknowledgements go to those staff who have left us since the 2015 AGM.

**Aram Wu** was with us for fixed term delivering the **Inside Out** educational video resources to a nationwide audience, the crown of which would have to be the launch at the Beehive in Wellington. Aram did significant work to build the awareness, knowledge and respect for both Inside Out and RY around the country.

**Jason Smith** came to RY on a placement, hoping to establish the role of Administration Assistant and contributed significant amounts to the organisation in terms of awareness and preparedness for the accessibility requirements of many.

**Chase Fox** was with RY since the beginning of 2015, leaving us in January 2016 to return to Wellington. Chase worked to increase the financial support RY receives, applying to new funds in his time with us.



Last is **Aych McArdle**, who had been our Education Director since 2014. Aych has left a big hole in the organisation, that is proving difficult to fill. Thank you Aych for your years of service to the organisation.

Our only new staff member this year is **Anahera Foley-Paama**. Anahera has taken over much of the social media you see daily, education coordination, and generally helping to make sure things run smoothly around RY!

I want to end by acknowledging all those who have contributed to RY over the last 12 months. Where we generally only have 4-5 paid staff, over 12 months the numbers of people who contribute their time and expertise to the organisation number in the hundreds. People like our board members, Executive Advisors, peer group facilitators, drop-in centre interns, placement students, committee members and senior members of our communities, all give their time for free for the organisation and the work that we do.

I'd also like to acknowledge all of our community and business partners, who commit their resources to working with RY to achieve our shared goals. Particular shout outs go to **ASB Bank** and the **ASB Unity Network**, who have enabled a number of activities and sponsorships for things we otherwise would not have been able to do. Being impossible to thank all our community partners individually, I'd like to highlight **Tīwhanawhana Trust** and **Ahakoia Te Aha** for their continued guidance.

It has been a fantastic 12 months, with many big changes at RY. Thank you again to all those involved, and thank you to those of you who will work to make change in the next 12 months.

# OUR SERVICES

IN THE LAST 12 MONTHS, RAINBOWYOUTH HAS...



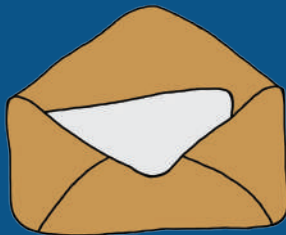
HAD NEARLY  
**40,000** VISITS TO  
OUR WEBSITE



HAD AN AVERAGE OF  
**12 PEOPLE**  
A DAY VISIT OUR CENTRE



RECEIVED OVER  
**1000**  
PHONE CALLS



HAD OUR RESOURCES  
REQUESTED OR  
DOWNLOADED OVER  
**500 TIMES**



# RY MEMBERS & VOLUNTEERS AWARDED FOR WORK



## KIWI BANK LOCAL HERO AWARDS

In 2015, three members of the RY whānau were awarded **Kiwibank Local Hero Medals** for their outstanding contribution to the LGBTIQ community.

Since 1989, volunteers have put in hour-upon-hour of hard work to get RainbowYOUTH where we are today. And it's incredibly special when they're acknowledged for the work they do!

We're super proud of our Co-Chair **Torranice** (Top, 2nd from left), Operations Coordinator **Anahera** (bottom, 2nd from left), & former facilitator **Kat** (below, middle) for all their awesome work at RY and in wider community!



## YOUTH WEEK AWARDS 2016

In May 2016 we visited the Beehive to celebrate the **Youth Week Awards**. Two of our awesome volunteers were recognised on the night: **Alice Dawson** – one of our interns (top right) and our Co-Chairperson **Rachel Brebner** (bottom right).

Alice has been with RY since she was 13. Her dedication and hard work makes her one of our most valued volunteers, and we're very proud to see her grow.

Rachel has also grown up in RainbowYOUTH, and was a group facilitator before stepping onto the board - first as Treasurer and then as Co-Chairperson. Their commitment to RainbowYOUTH, hard work and leadership are a pillar of strength for our organisation!

Congrats Alice & Rachel, your RY whānau is very proud of you both!

Ry would like to congratulate to the other young people and groups who received awards. It's an honour to be all working together to uplift our rangatahi.







## BREAKING GROUND IN CLASSROOMS AROUND NZ

Throughout the 15 years that we've been delivering education and professional development sessions, we've been frustrated by funding restraints that restrict us to delivering these workshops mostly in Auckland, only occasionally being able to venture outside of Auckland.

As part of our national focus, we teamed up with **Curative, Core Education, Ministry of Social Development & University of Auckland** to create a resource that can be used for free all around Aotearoa - **Inside Out!**

The Inside Out video resource is made up of five 10-12 minute videos for year 9 - 13 (high school) students and one slightly longer episode for year 7-8 students (intermediate). Alongside each resource sits a beautifully designed lesson resource and glossary that teachers and community organisations can use to frame reflection and discussion on each episode.

In September 2015, Inside Out was officially launched around Aotearoa, with events and workshops held in **Auckland, Wellington, Hamilton, Palmerston North, Christchurch, Whangarei, Tauranga, Hastings, Dunedin** and **Nelson**. A big thank you to our regional partners in these areas, who made these events possible, as well as to **Aram Wu**, who spearheaded Inside Out's roll-out across the country.

Since it's release, Inside Out has been downloaded around **300** times, and the RY education team has delivered the resource into a number of schools and organisations.

The next steps for Inside Out include a research project to explore how the resource is being used in schools, youth organisations, and workplaces. Watch this space!

[www.insideout.ry.org.nz](http://www.insideout.ry.org.nz)

## RY AT THE LOVE LIFE FONO



In early December 2015, RY staff attended the **Love Life Fono** - a 3 day hui dedicated to the Rainbow Pacific community. Staff found it a great learning and network opportunity, and were excited to be a part of the incredible creativity and connections that the Fono represents. We're looking forward to the next one already!

*Pictured: RY Support Manager Morgan (second left) with members of **Evolve**, **Schools Out** and **Tranzform**.*

## QUEER THEORY & THE HOLOCAUST



In early March, we had the privilege of hosting the Auckland leg of **Professor William Spurlin's** tour. His lectures at **Auckland Museum**, **AUT**, **Onehunga High School** & **Remuera Library** shed light on the Nazi persecution of gays & lesbians, and analyzed the plight of queer black writers in French colonised Africa.

It was incredible to see Professor Spurlin's lectures reach such a diverse range of audiences. Thank you to the **Raye Freedman Trust**, the **Rule Foundation** & the **Holocaust Centre of New Zealand** for making this tour possible!

## AUCKLAND PRIDE FESTIVAL 2016



With our move coming up fast, we weren't able to hold as many events as previous years, but that didn't stop us from enjoying the ones we did! Our **Interfaith Panel**, held at **Studio One**, was a great night of discussion and connection. At the **LYC Big Gay Out** we teamed up with **Community Alcohol and Drug Services (CADS)** & **Community Action Youth and Drugs (CAYAD)** to deliver some punny valentines day themed healthy drinking stickers. Thanks to **ASB** for sorting out our stall at the BGO, and to the **Health Promotion Agency** for helping us promote healthy drinking behaviours.



We were lucky enough to be joined by an amazing bunch of youth services in the **Auckland Pride Parade** this year: **ME Family Services**, **Talatalanoa**, **Youthline**, **Village Collective**, **Holding Our Own** and **EquAsian**. A big shout out to **Rainbow Auckland (formerly GABA)** for supporting us to march!

We'd like to make another shout out to our awesome volunteers who helped make Pride happen for RY, including photographer **Leo Waters** and designer **Caitlin Watters**.





## ASB & RY 2016 TERTIARY SCHOLARSHIP

During the Auckland Pride Festival, we had the exciting opportunity to work with **ASB** to award a \$2,500 scholarship to a tertiary student who had made a significant volunteer contribution to the rainbow community.

To announce the scholarship winner, we hosted a gathering to celebrate RainbowYOUTH's different supporters and partnerships over the last few years, focused around what sustainable partnerships have helped RainbowYOUTH achieve.

The funds for the scholarship came from the **ASB Unity Network** winning the Australia/New Zealand award for promoting diversity from parent company, the Commonwealth Bank of Australia. Two generous ASB customers, **Dr Lee and Paul Garlington**, matched the amount of the Tertiary scholarship, allowing us to award two scholarships instead of one.

The **ASB & RainbowYOUTH Tertiary Scholarship** was awarded to **Brodie Fraser**. Brodie has spent over 3 years volunteering in the community, starting when she founded a rainbow support group at her high school.



*L to R: ASB Unity Member Carl Ferguson, scholarship recipients Brodie Fraser & Caitlyn Drinkwater with RY Executive Director Duncan Matthews*



*ASB Bank CEO Barbara Chapman discusses ASB's commitment to the rainbow community & the formation of the ASB Unity Group*

She later went on to volunteer with queer and gender diverse specific organisations in Wellington: **InsideOUT** and **Schools Out**. She is currently working towards a Masters in Political Science at **Victoria University** – with a particular focus on political participation and intersections of inequality.

The second winner of the night and recipient of the **Dr Lee and Paul Garlington scholarship** was **Caitlyn Drinkwater**. She's been involved as a volunteer for a number of years with **RainbowYOUTH**, **OUTline** and the **Anxiety Trust**, and was one of only 11 students selected into the Doctorate of Clinical Psychology program at the **University of Auckland**. In her studies she plans to research the relationship between transgender people and health services.

Congratulations to Brodie & Caitlyn - as well as to all the awesome applications we received this year. Rewarding the hard work of volunteers around Aotearoa is something we love to do, and we're excited to work with ASB again to offer the scholarship in 2017! Woo!

## OUR HISTORY IS HERE

Mid-way through 2015, we teamed up with **Auckland Libraries** to begin the process of archiving our old photos, resources, posters, newsletters & reports. This means that RainbowYOUTH's history is more easily mapped out and also provides an important research tool for those who are studying LGBTIQ history in Aotearoa.

Our archiving project also allows us to reach out to a few past members of RY to record their memories and experiences during their time. They have shed light on the different struggles faced by the rainbow community during our history. This project is ongoing and we can't wait to discover more of RY's history.

## TRANSGENDER WEEK OF AWARENESS 2015

RY was honored to team up with **Trans on Campus** and **Gender Bridge** to help host a series of events for **Trans Week of Awareness** in November of last year. The week kicked off with a screening of Australian trans film **52 Tuesdays**, and a post-film discussion with **Cole Meyers**, star of NZ trans film **Actually Alex**.

The next event was a **Sex Workshop** run by **Louise Bouchier**. The workshop covered all aspects and issues experienced by trans people accessing sex. **Transacademia**, a conference of trans academics at the **University of Auckland** was a highlight of the week, followed up by a service at **St Matthews Church** for **Transgender Day of Remembrance**.

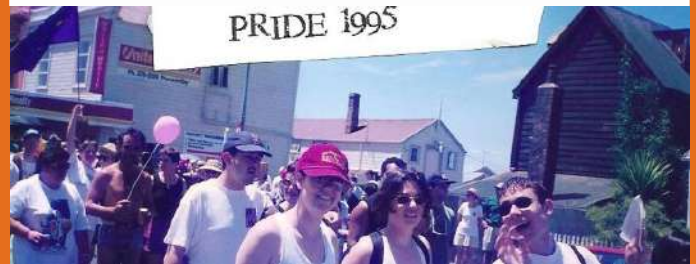
## RY AT THE SONY WORLD PHOTOGRAPHY EXHIBITION

Our former co-chairperson Sam spotted and shared photos of our **Community Wardrobe** at the **Sony World Photography Exhibition** in London. Thanks to the very talented and awesome **Matilda Fraser** who chose to highlight the **Community Wardrobe** in her work.



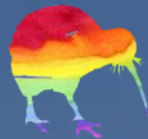
### LESBIAN AND GAY YOUTH:

"When I first thought I was gay I had feelings of overwhelming fear, dread and guilt which lasted 2-3 years. I had never once heard so much as one positive word about being gay all my childhood/teenage years and expected a lonely, ostracised, sad and possibly bitter life."



*Pictured: Our Trans Rep Torranice (far left) speaking at the Transgender Day of Remembrance memorial service at St Matthews Church with members of Talatalanoa & ME Family Services.*





## THE I'M LOCAL PROJECT

[imlocal.co.nz](http://imlocal.co.nz)

The I'm Local Project has had a busy 12 months! We've launched a new website - which brings together informative articles about queer and gender diverse issues, a region-by-region directory of all the queer and gender diverse groups around Aotearoa as well as a place where you can order I'm Local resources for **free**! We've been sending out resources for the past year around 3-4 times a week to organisations and schools all around the country. During June/August/September 2016 we're running a crowdfunding campaign to fundraise for printing more booklets.

Earlier this year we also supported our placement intern Lorren as they collect stories from rural queer and gender diverse youth around NZ for their study about sexuality, gender identity and physical landscapes. We're so excited to add their ground-breaking research to the I'm Local Project - it'll give us great insight into what else we can do to help our rural communities!



Hi!  
 my name is Josie chambers and i'm one of the leaders of Wac Spectrum, the QSA for wellington girls college. I recently ordered a pack of booklets and posters and i wanted to send a quick thank you. The pack arrived super quickly and the booklets (and posters!) are absolutely perfect. They will be absolutely perfect as until now we've had no physical resources to give out. The booklets are super lovely and colourful and informative and i'm super excited to be able to give them out. I really think that they will help us to run our club + help others who may be questioning their sexuality. I think the work you are doing is really important and i'm really glad that ~~my~~ ~~the~~ our club gets to be a part of that. I think resources like this would've been really helpful for when i was first questioning my own sexuality and i hope i get to help others out in the same way.



# MEET THE RY WHĀNAU



**IZZI PANETTIERE** is one of the facilitators of our peer-support group **Tauranga Pryde**.

**Pronouns:** She/Her

**Favorite website:** Netflix

**Favorite movie:** The Way He Looks

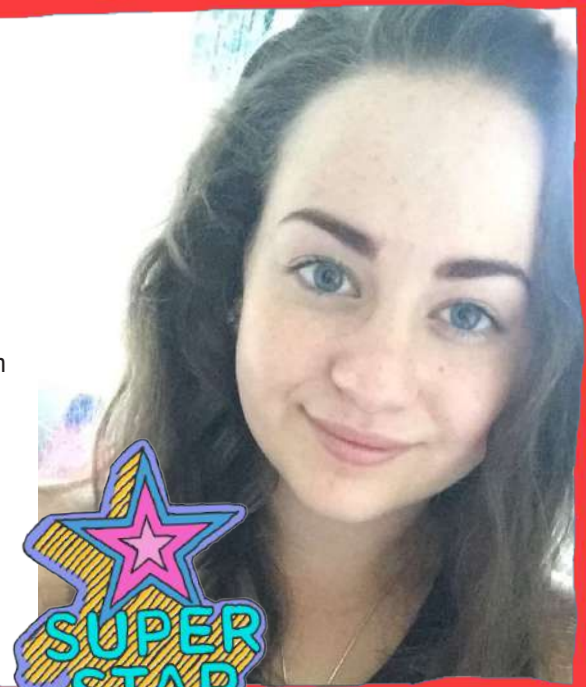
**Favorite snack:** Potato chips

**What's the best thing about having a peer-support group?**

It means that there is somewhere safe that people like us can be ourselves and it is nice to see teens comfortable with themselves even if it is only at group that this can happen.

**What's the most common issue faced by young people in your group?**

The most common issue that is faced by young people in Tauranga Pryde is their family supporting them, a lot of the young peoples parents and gaurdians are not ok with their children's sexuality/gender.



**HAYDEN LONG-SMITH** is one of the facilitators of our peer-support groups **Star\*** and **G.Q.**

**Pronouns:** They/Them

**Favorite website:** Probably Tumblr or Twitter

**Favorite movie:** V for Vendetta

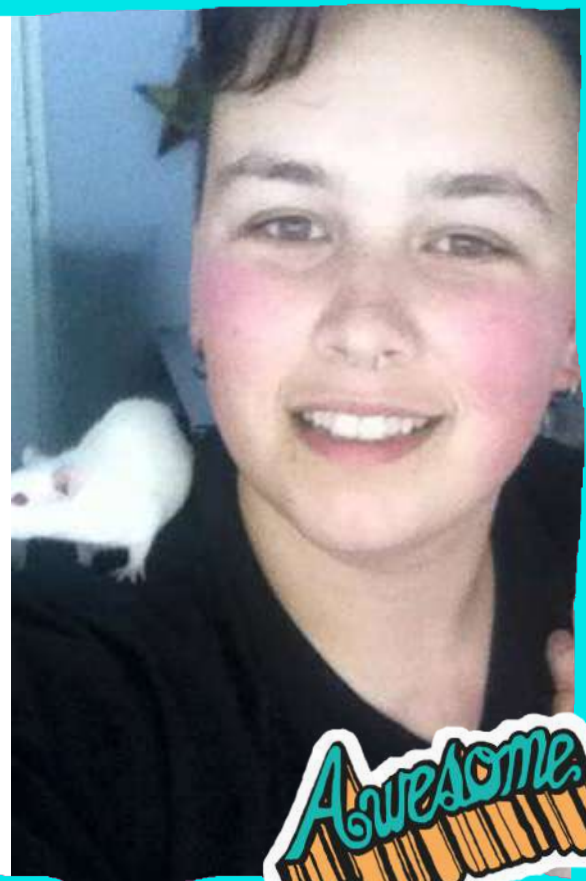
**Favorite snack:** Sweet and salty popcorn

**What's the best thing about having a peer-support group?**

Personally it gives me a sense of belonging and is an environment in which I don't have to explain everything as much because a lot of their experiences are similar so they just get it. Also from a facilitators perspective being able to run a group like this is great because it gives me a sense of purpose, it definitely makes me feel useful and helpful even if all I can do to help someone is simply creating an environment in which they can feel safe and talk openly.

**What's the most common issue faced by young people in your group?**

I think particularly with the G.Q. group one of the things thats talked about a lot is the school environment, particularly teachers saying really quite harmful stuff about the LGBTIQ community.



# FACILITATOR HUI 2016

On the 28th and 29th of June we ran our annual **Ngaruru Kahukura Facilitator Training Hui**. Held at **Tamaki College Marae**, the weekend consisted of a series of workshops to help skill our peer-support group facilitators.



Workshops covered a variety of topics - self-care, cultural competency, sexuality, gender and intersex 101, mindfulness, and how to make groups as inclusive as possible. We're very proud and excited about the amazing work our young volunteers do for our community.

Thank you to those who presented at the hui: Jonathan Selu, Aram Wu, Elizabeth Kerekere (**Tiwhanawhana Trust**), Cissy Rock, Tommy Hamilton, Stace Robertson and Mani Mitchell (**ITANZ**). Also our thanks goes to **Tamaki Collage** for their hospitality, and to **Ara Taiohi** for providing funding for the hui.

Those interested in facilitating or joining one of our groups can email: [info@ry.org.nz](mailto:info@ry.org.nz) for further information.



## THE NEW GROUPS ON THE BLOCK



### Outside the Box

Outside The Box is RY's Auckland-based rainbow outdoors & activities group.

Meetings involve snacks, planning for upcoming events, learning about outdoor skills, and having a great time. Meetings at 4:30pm every second Tuesday at the RY drop-in centre.

Find out more and join the group on Facebook: [www.facebook.com/groups/outsidetheboxRY](http://www.facebook.com/groups/outsidetheboxRY)



### DungeonQueering

Abandon all hope ye who enter here and prepare yourself for a treacherous journey. You will be guided on quests to explore dungeons, slay beasts, conquer empires and save the young Prince/Princess in distress.

The official RainbowYOUTH D&D group is launching soon out of our drop-in centre in Auckland! We plan to gather like minded rainbow geeks together for awesome adventures. Find out more through the facebook group: [www.facebook.com/groups/dungeonqueering](http://www.facebook.com/groups/dungeonqueering)

## TREASURER REPORT - HAMISH TAIT

Hi, my name is Hamish, and I took over as RainbowYOUTH's treasurer in March 2016. I'd like to acknowledge Rachel Brebner and Beth Maynard, who both volunteered as treasurer before me during the current board term.

The 2016 financial year has been a big one for RY, with recognised income expected to top \$320,000. We have been grateful to receive grants from a range of sources, including from the **Auckland Council** and **Local Boards**, the Government's **Community Organisation Grants Scheme**, **SkyCity**, the **Lotteries Commission**, **Rainbow Auckland**, **The Rule Foundation**, **Lush NZ's Charity Pot** scheme, **Te Ara Whiriwhiri** and **Ara Taiohi**. We have also made special mention of some more of our funders below.

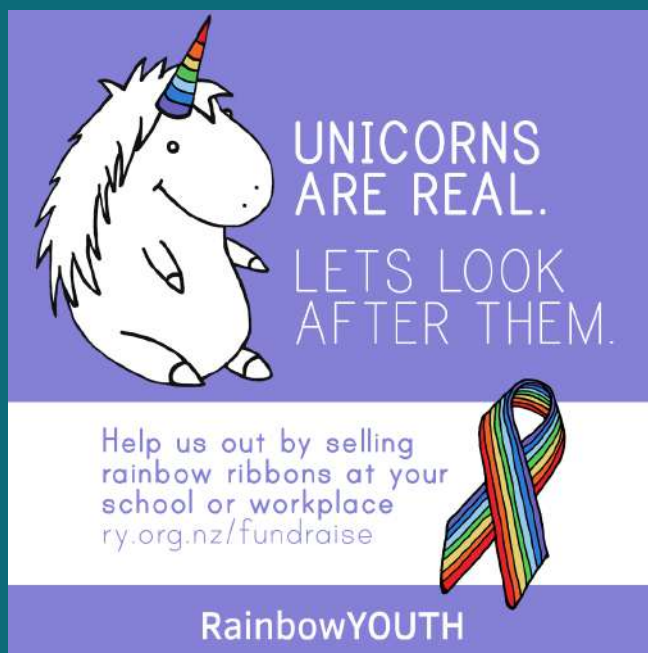
Although a record year, 2016 has also been a challenging one for RY in a number of ways. These challenges included the move into larger premises, which strained our finances at times. A big thank you to those who supported us through this process.

This year, we are fortunate to have again had valuable support from the **Raye Freedman Trust** – one of RY's biggest supporters for some time. Thanks also to **ASB**, which has similarly continued its valuable support of RY. For this first time this year, ASB also sponsored two tertiary scholarships which were awarded to support young people undertaking research in an area relevant to queer and gender diverse communities. We look forward to continuing to partner with ASB over the coming year.

RY has also received grants from both the **Ministry of Youth Development** and the **Ministry of Social Development (MSD)**. In addition, MSD has recognised the valuable work carried out by RY by announcing further funding of \$150,000 over three years from November 2015. This funding will help RY to plan projects and deliver services over the longer term, ensuring sustainable growth over the next few years, thanks to the ongoing relationship with the **Hon. Nikki Kaye - Minister of Youth Affairs**.

2016 has seen an increase in personal donations, due to increased emphasis on **rainbow ribbons** and our **Make Your Morning Ritual Matter** campaign.

RY has now steadily increased total income for the last four years running. We think that this reflects the growth of our organisation, as well as increased demand for our services. In line with our long term strategy, we hope to see this trend continuing over the coming years.





# RY'S GENEROUS DONORS & SUPPORTERS

for the 12 months ended 31st March 2016

## A - E

ACC Dunedin  
Andrew Gear  
Anne Olsen  
ANZ Bank  
Ara Taiohi  
ASB Bank  
Auckland Rainbow Community Church  
Audrey Hutchenson  
Blue Baths  
C L Wall  
Carolyn Lawso  
Ciaran Hyslop  
Clyde Pereira  
Cogo Consulting  
COGS  
Core Education  
Cranium Solutions  
Dan Beadle  
David Hemy  
Droplet Charities  
Duncan Matthews (Duncan Digital)  
Dylan Jauslin  
E R Borra  
Ellen Bouche  
Ernst & Young G

## F - J

Felicity Day  
GABA  
Gabriella Trussardi  
Gerard Kemp  
GIAPO AUCKLAND  
Give a little  
Greenbay High School - Health Expo Day  
Health Promotion Agency (HPA)  
Hearn B R  
Jacob Lilley  
Jennifer McDonald-Tohill  
Jo Morris  
John Egan  
John Alcock  
Julie Watson

## K-O

Kaipatiki Local Board  
Kate Doran  
KZ Vucich  
Laneway Properties Limited  
Lotteries  
Lucy Boomer  
Manfred Lange  
Marianna Brown  
Matt McEvoy  
Melissa Pham  
Merv Ransom  
Michael Potts  
Michelle Hudson  
Ministry of Social Development  
Ministry of Youth Development  
MR W JOHNSTON A  
Nick Laing  
Nick Tuck  
Nicola Robinson

## P - T

Paul & Lynne Matthews  
Paul Randoms  
Peggy C  
Ponsonby Baptist Church  
Rachel Walker  
Raye Freedman Trust  
Rita Langley  
Rule Foundation  
S P Shuttleworth  
Samuel Herdman  
Sandra and Ian Watson  
Shane Elfield  
Sian Evans  
SkyCity  
Sue Clement  
Tamryn Hardley  
Tania Domett  
Te Ara Whitiwhiti  
Te Rito  
Terry Bland  
Todd Emerson  
Tumanako Productions  
TWL Harrison





## RY IN THE MEDIA 2015/2016

Over the last year, RainbowYOUTH's presence in mainstream and LGBTIQ media has been consistent and varied. Our education resource Inside Out garnered national media attention during its release in September 2015. As well as this, RainbowYOUTH were sought out to contribute to national conversations around queer and gender diverse issues - particularly surrounding gender diversity, creating safe school environments and gender neutral bathrooms. On average, RainbowYOUTH received weekly coverage in either mainstream or LGBTIQ media over the last 12 months.



**one news** **Inside Out bringing awareness to high school students**

Sun, Sep 20 Share

Nicole Bremner ONE News Reporter

New lessons that aim to stop bullying and increase awareness of sexually diverse teens are being rolled out across the country.

**health**

Euthanasia debate Global Drug Survey

### New research shows students want LGBTI education

JESS MCALLEN Last updated 15:35, July 16 2015



**Family First policy is "fear mongering"**

Posted in: New Zealand Daily News By GayNZ.com Daily News staff - 14th March 2016

Conservative social pressure organisation Family First is "attempting to confuse the issue of making accommodations for transgender and gender diverse students with the idea of 'letting all young people get changed/shower/etc together'" according General Manager of Rainbow Youth, Duncan Matthews.

**Newstalk ZB**

NEWS ON DEMAND ON AIR OPINION WHAT'S ON COMPETITIONS LIFESTYLE PHOTOS WEATHER TRAFF

WEEK ON DEMAND VIDEO AUDIO LISTEN FROM OVERSEAS LISTEN VIA SONGS

### Govt to help fund LGBTI support network

George Freeman, National, Monday, 16 November 2015, 6:23AM

**AucklandNOW**

Local News Sport Auckland weather Events Northland Traffic cams Classifieds Cont

### Rainbow Youth on the move from K Road

CATRIN OWEN Last updated 10:21, March 8 2016

**The Timaru Herald**

News Sport Opinion Life Free Titles Waitaki Herald South Canterbury

### South Canterbury principals open to gender-neutral bathroom possibility

DAISY HUDSON AND JESSY EDWARDS Last updated 17:12, March 9 2016

**TEARAWAY THE VOICE OF NZ YOUTH**

FEATURES LOOT! CONTRIBUTE THE COMMON ROOM OUR MATE

### RAINBOW YOUTH

HOW TO BE AN LGBTIQ ALLY APRIL 14, 2016

WHAT TO DO IF YOUR FRIEND COMES OUT AS BISEXUAL MARCH 23, 2016

LGBTIQ: YOUR QUESTIONS ANSWERED MARCH 4, 2016

## 2015 AGM MINUTES - June 28th

**OFFICIAL WELCOME:** 12:00 pm  
**FORMALITIES BEGIN:** 1:00 pm

**MC:** Alexander Stevens

**Motion:** Pass minutes from 2014 AGM  
**1st:** Rachel Brebner  
**2nd:** Daniel Chorley  
**Vote:** 16 for

### OFFICER REPORTS

**Co-Chairs:** Rachel Brebner, Joe Gatland  
**General Manager:** Duncan Matthews  
**Treasurer:** Taine Polkinghorne

**Motion:** Accept officer reports and 2015 Accounts  
**1st:** Melanie Govender  
**2nd:** Jono Selu  
**Vote:** Passed with 32 for

### PROPOSED CHANGES TO THE RAINBOWYOUTH CONSTITUTION:

**Motion:** To hold off voting on the proposed constitution change until further membership consultation by board.  
**1st:** Jono Selu  
**2nd:** Amanda Parkinson  
**Vote:** Passed with 26 for, 2 against, 2 abstaining

**Motion:** Concerning filling the Māori & Pacific Rep Position  
**1st:** Joe Gatland  
**2nd:** Kiran Foster  
**Vote:** Passed with 31 for, 1 abstaining

#### **With recommendations:**

- The board to create a policy outlining actions to find new members
- We split the Māori & Pacific Rep position into two and have a takatāpui rep and a pacific rep

### EXECUTIVE BOARD ELECTIONS

**Motion:** Current board stands down

**Motion:** Elect three non-voting members as vote counters for election:  
1) Aram Wu  
2) Melanie Govender  
3) Tama Tauria from ASB  
**1st:** Alexander Stevens  
**2nd:** Joe Gatland  
**Vote:** Passed with 32 for

**Anonymous Vote - Māori and Pacific representative elected:**

Emilie Rākete

**Anonymous Vote - Trans\* representative elected:**

Torranice Campbel

**Anonymous Vote - 8 general board member positions elected:**

- 1) Aaliyah Zionov
- 2) Beth Maynard
- 3) Natasha Gaffin
- 4) Nicky Thorburn
- 5) Sophie Sills
- 6) Justine Sachs
- 7) Amanda Parkinson
- 8) Avery Watson

**Anonymous Vote - Indicative vote for office holder positions:**

**Co-chairpersons (x2):**

Torranice Campbel, Amanda Parkinson

**Treasurer:**

Beth Maynard

**Secretary:**

Beth Maynard

**Motion:** Accept votes as they stand

**1st:** Beth Maynard

**2nd:** Kiran Foster

**Vote:** Passed with 22 for

### GENERAL BUSINESS - OPEN FLOOR

Farewell to Daniel Chorley.

**Motion:** Offer a Life Membership to Daniel Chorley.

**1st:** Rachel Brebner

**2nd:** Taine Polkinghorne

**Vote:** Passed with 22 for and 1 abstaining

**Meeting Closed: 5.30pm**

*Know who you are,  
be who you are.*

*Whaia to ake ngakaunui,  
i te pono, i te marama.*

RainbowYOUTH



TE ARA WHIRIWHIRI

RULE FOUNDATION  
rulefoundation.nz



MINISTRY OF  
YOUTH DEVELOPMENT  
TE MANATŪ WHAKAHIATO TAIOHI  
Administered by the Ministry of Social Development



Community Organisation  
Grants Scheme



FOUNDATION  
NORTH  
Te Kaitiaki Pūtea o  
Tamaki o Tai Tokerau



AraTaiohi  
For people working with young people



RAYE  
FREEDMAN  
TRUST



www.grassrootstrust.co.nz



Lottery Grants Board  
Lotto FUNDS FOR YOUR  
COMMUNITY



Te Kaunihera o Tāmaki Makaurau